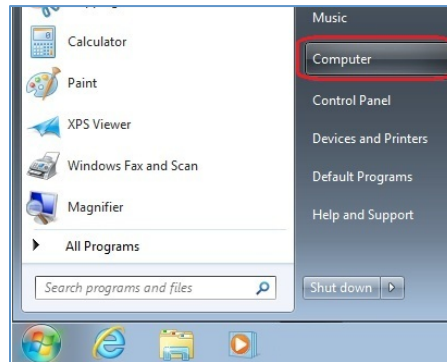


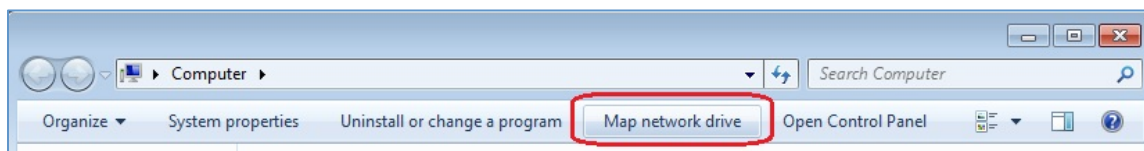


Mapping Network Drives on Windows 7

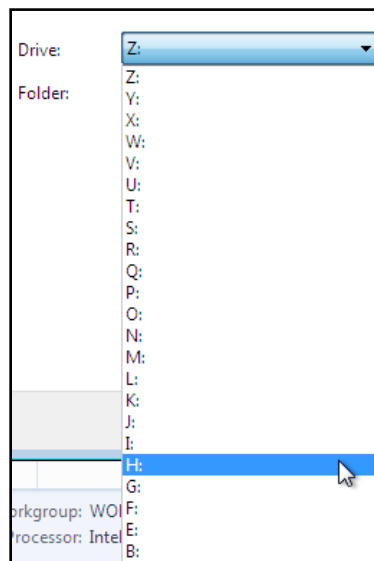
1) Click on Start and then click **Computer**.



2) In the Computer window, click on the **Map Network Drive** button at the top.

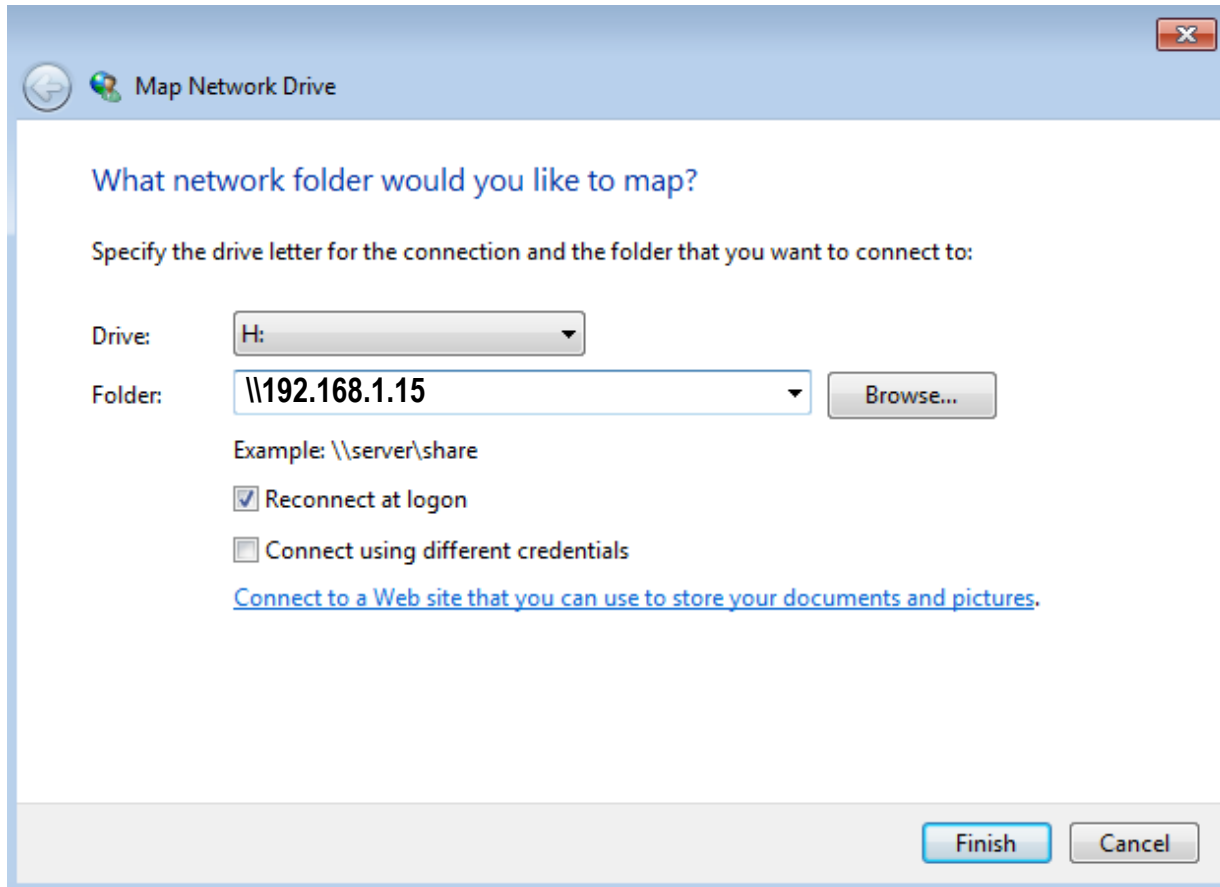


3) In the Map Network Drive window, select the drive letter that best corresponds to the drive you are mapping. In this case, we are mapping a users Home drive so we will use drive letter **H:** (however, you may use any letter if H is already being used)





- 4) In the Folder field, input the destination of the drive you are mapping. For our Home drive we will input **\\PIMEDIA IP ADDRESS**



- 5) A new window will open displaying the contents of your new H: drive. Close this window and in the Computer window you will now see your new mapped drive listed.

